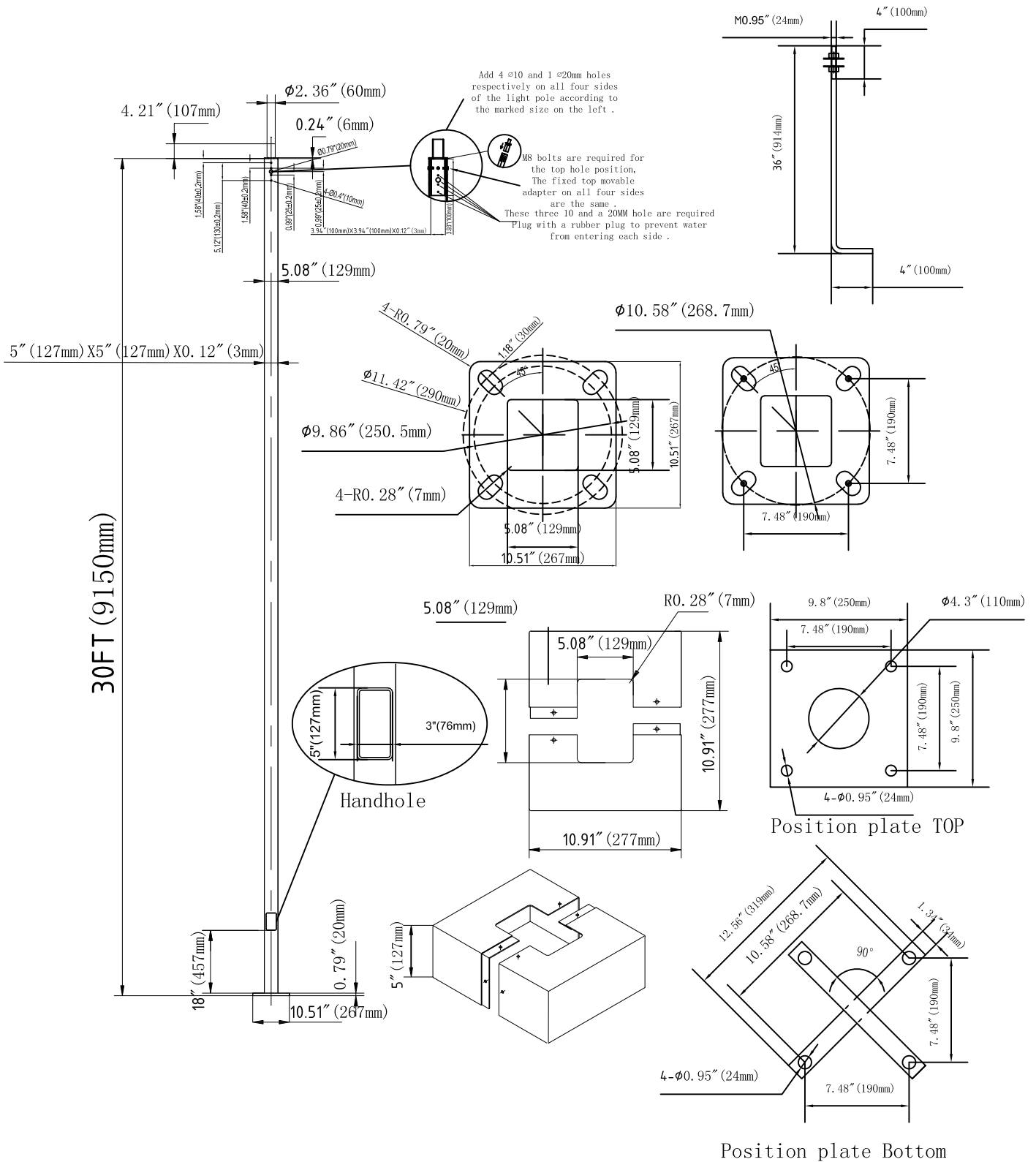


30FT (9150mm)



Add 4  $\varnothing 10$  and 1  $\varnothing 20$ mm holes respectively on all four sides of the light pole according to the marked size on the left.

M8 bolts are required for the top hole position. The fixed top movable adapter on all four sides are the same. These three 10 and a 20mm hole are required Plug with a rubber plug to prevent water from entering each side.

- Technical requirements
1. The light pole shall be made of Q235 steel The surface and inside of the light pole shall be dipped in zinc and then sprayed on the surface. Failed to chamfer 0.5MM.
  2. All welding (electrode) shall be full, and there shall be no false welding, burr or other defects.
  3. The unmarked tolerance shall be executed according to the common tolerance table.
  4. Meet RoHS standards.

		edition		Modifier		Time of modification		Repair the interior	
Material No.		Edition	A/1	Page	1/1	Tolerance requirements:(tolerance without special requirements)		Date	
Material Name	30FT5-11G-D-T	proportion	1:1	Angle		NO	$\pm 0.2$	mapping	
Specification Description		unit	mm			.x	$\pm 0.1$	check	
Drawing Number		material quality				.xx	$\pm 0.05$	routine and verify	
						.xxx	$\pm 0.015$		